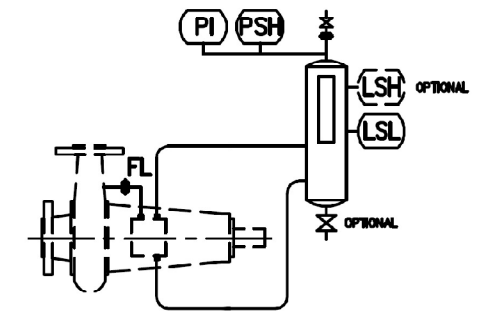


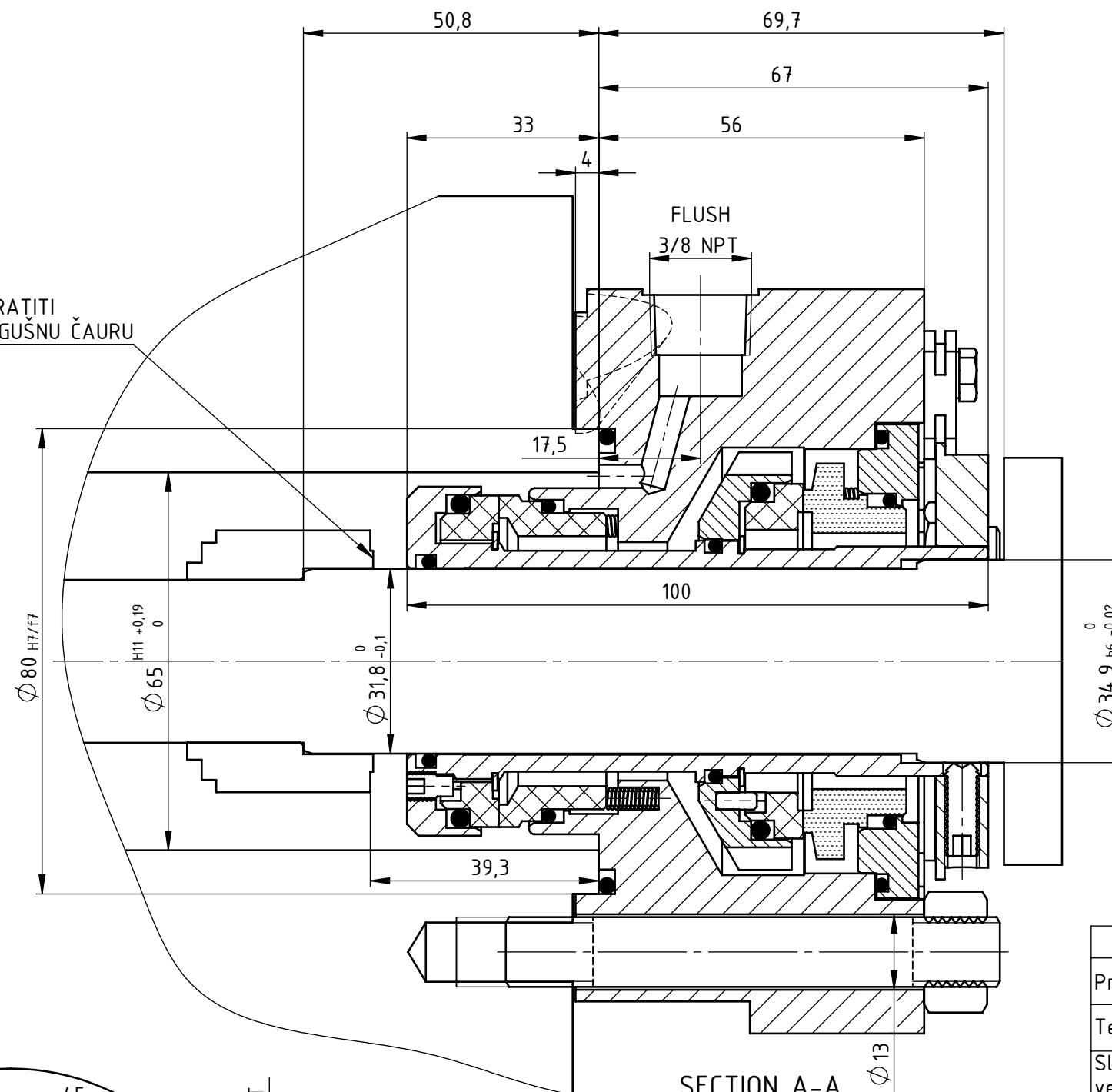
API PLAN 11-53A SCHEMATIC



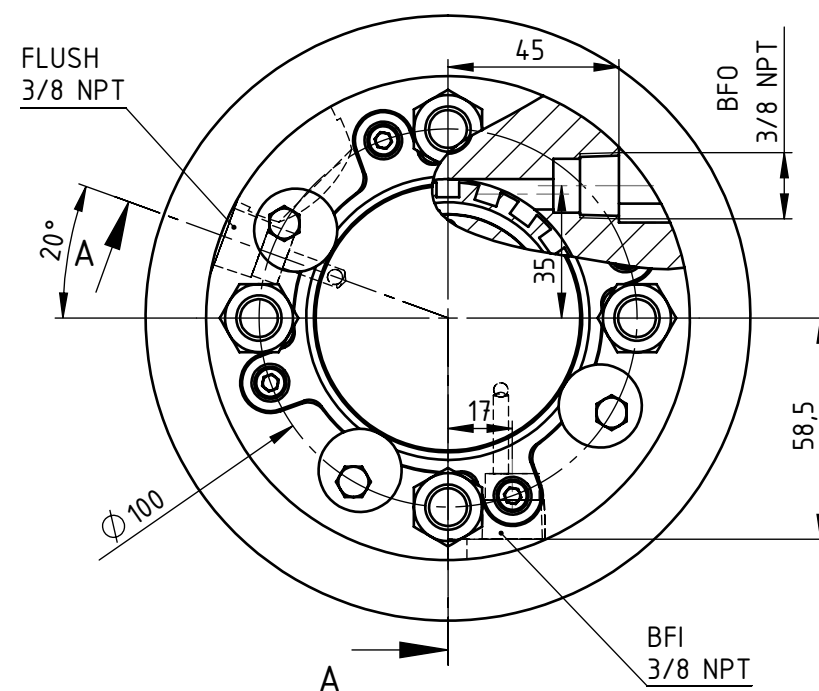
API PLAN 11
Recirculation from pump discharge through orifice to mechanical seal

API PLAN 53A
External reservoir pressurized above seal chamber pressure providing barrier fluid to mechanical seals.
Forced circulation.

SKRATITI PRIGUŠNU ČAURU



SECTION A-A
SCALE 1 : 1



Seal operating range	
Pressure	vacuum do 35bar
Temperature:	260 °C
Sliding velocity:	25m/s

Seal data	
Assembly code:	RCS-D-S/31.8-34.9
API plan:	11/53A
API Code:	13A-PIQ/R-032/035-11/53A
Material code:	Q1Q1KGG/Q1AKGG

Service data	
Fluid:	Fractionator bottoms
Barrier fluid pressure:	
Chamber pressure:	
Suction pressure:	0,94bar
Discharge pressure:	12.52bar
Process temperature:	90 °C
Shaft speed:	2900 RPM
Vapour pressure:	
Viscosity:	5,9 cSt

Komada		Masa	Razmera
Datum		Proizvod	Dimenzija
Konstr		RCS-D-S	Ø 31.8/ Ø 34.9
Crtao			
Stand			
Overio		Kupac - NIS	
Broj crteža		List	
1200181218		L	
Izv. pod.		Zamena za:	

KROMA Ltd